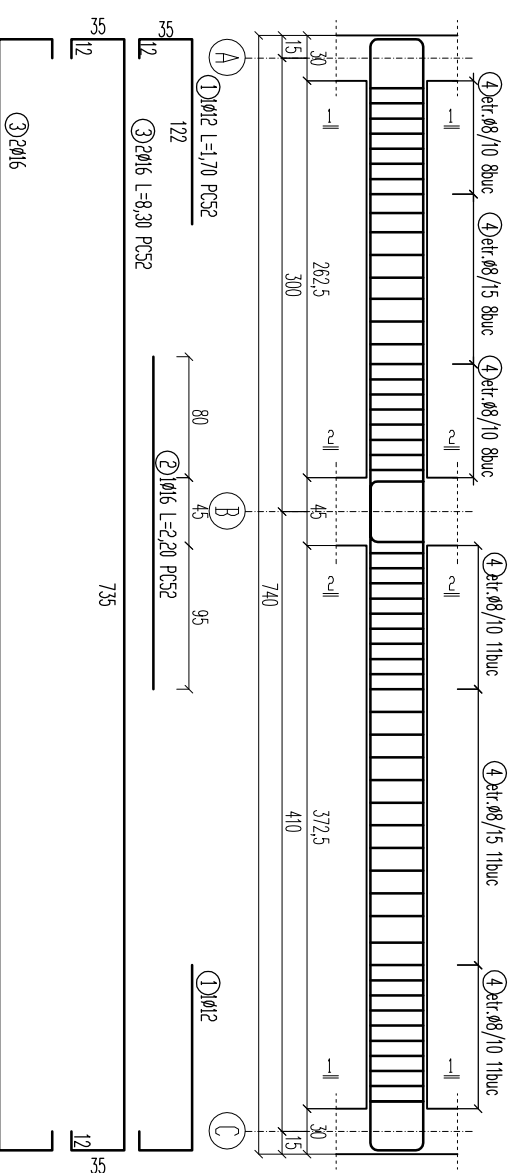
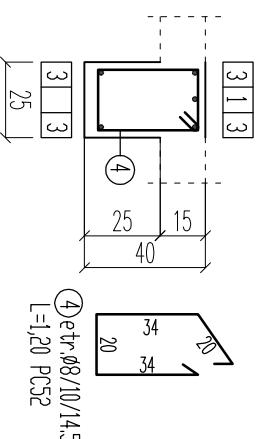


PLAN COFRAJ SI ARMARE GRINZI TRANSVERSALE AX 1,4

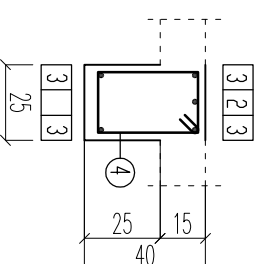


← 2,95 ← 5,95

SECTIUNEA 1-1 (1:25)



SECTIUNEA 2-2 (1:25)

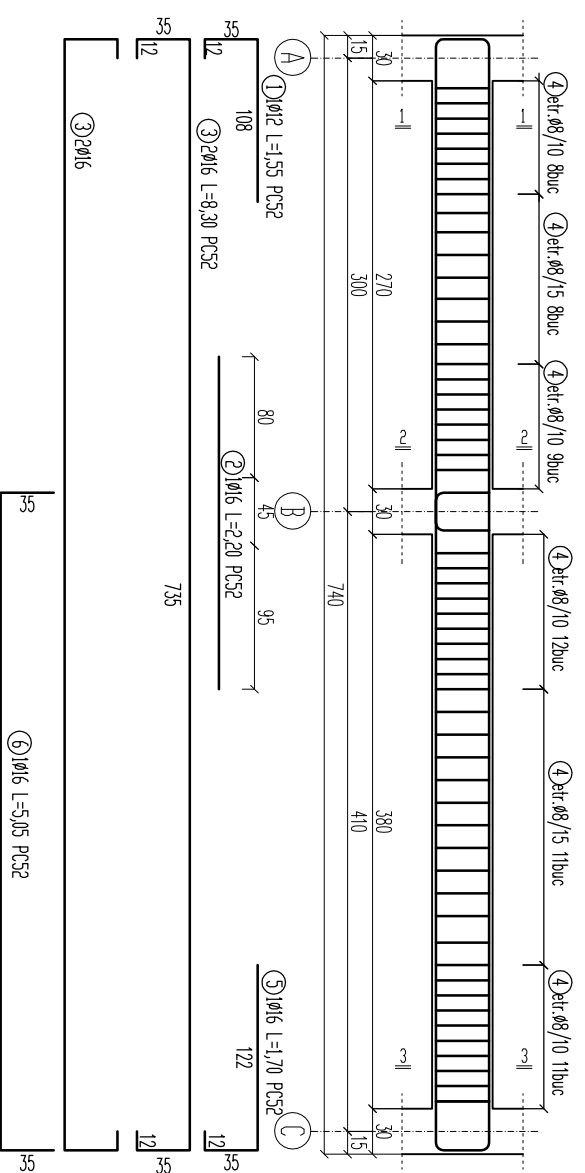


PLAN COFRAJ SI ARMARE GRINZI TRANSVERSALE

1/50

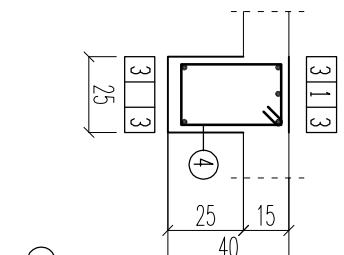
Consum armatura pt. grinda transversala ax 1 (4)		Lungimi / ϕ							
Marca	ϕ	L	Buc.	Lungimi / ϕ					
				OB37 $\phi 6$	$\phi 8$	$\phi 10$	$\phi 12$	$\phi 16$	
1	12	1.70	2				3		
2	16	2.20	1					3	2
3	16	8.30	4						33
4	8	1.20	58			70			
Total lungimi pe ϕ (m)						70		3	35
Greutate pe ml (kg/m)				0.22	0.39	0.62	0.89	1.58	
Greutate pe ϕ (m)					27		3	56	
Greutate totala (kg)									86

PLAN COFRAJ SI ARMARE GRINZI TRANSVERSALE AX 2,3

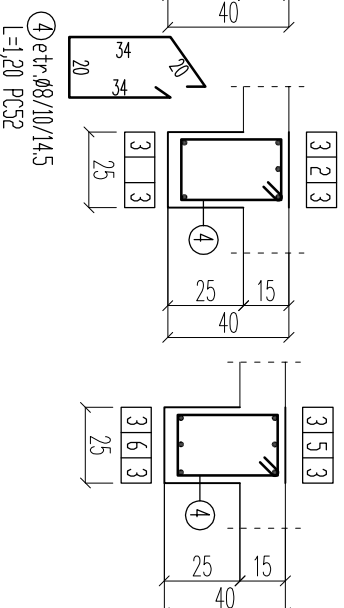


← 2,95 ← 5,95

SECTIUNEA 1-1 (1:25)



SECTIUNEA 2-2 (1:25) SECTIUNEA 3-3 (1:25)



Consum armatura pt. grinda transversala ax 2 (3)		Lungimi / ϕ							
Marca	ϕ	L	Buc.	Lungimi / ϕ					
				OB37 $\phi 6$	$\phi 8$	$\phi 10$	$\phi 12$	$\phi 16$	
1	12	1.55	1				2		
2	16	2.20	1					2	2
3	16	8.30	4						33
4	8	1.20	60			72			
5	16	1.70	1						2
6	16	5.05	1						5
Total lungimi pe ϕ (m)						72		2	42
Greutate pe ml (kg/m)				0.22	0.39	0.62	0.89	1.58	
Greutate pe ϕ (m)					28		1	67	
Greutate totala (kg)									96

CLASIFICARE CF.P100/06: CLASA III DE
 IMPORTANTA, AMPPLASAMENT: OTOPENI,
 jud. ILOV Tc=1,6 sec, ag=0,30

BETON C20/25
 OTEL Pc 52,
 Acoperire cu beton c=25mm
 Cotele etrierilor se masoara la interior