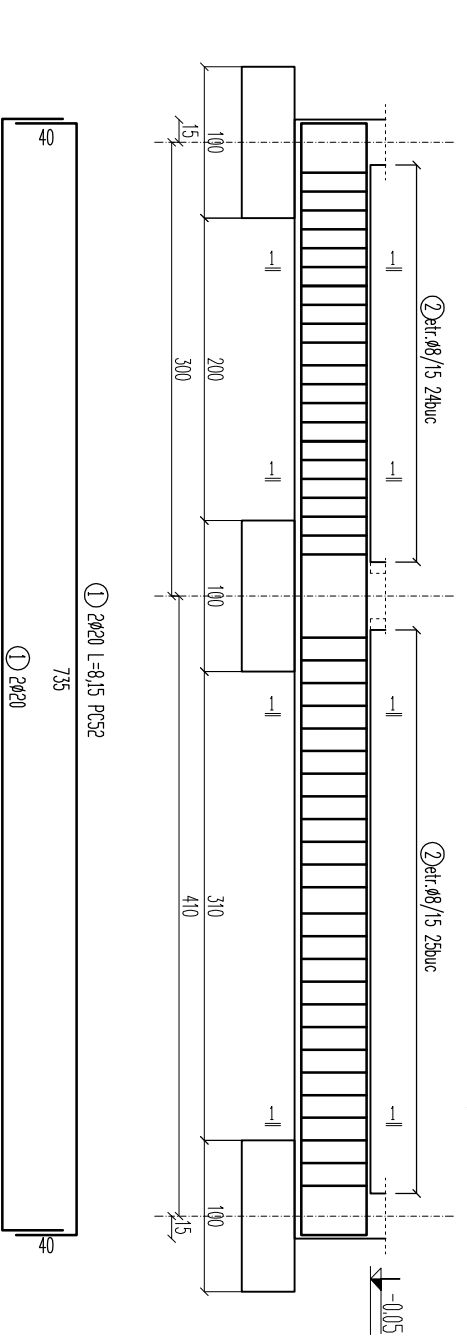
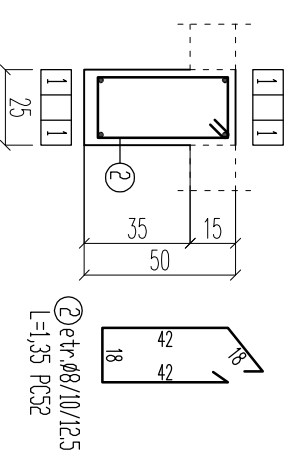


PLAN COFRAJ SI ARMARE GRINZI DE ECHILIBRARE TRANSVERSALE AX 2, 3



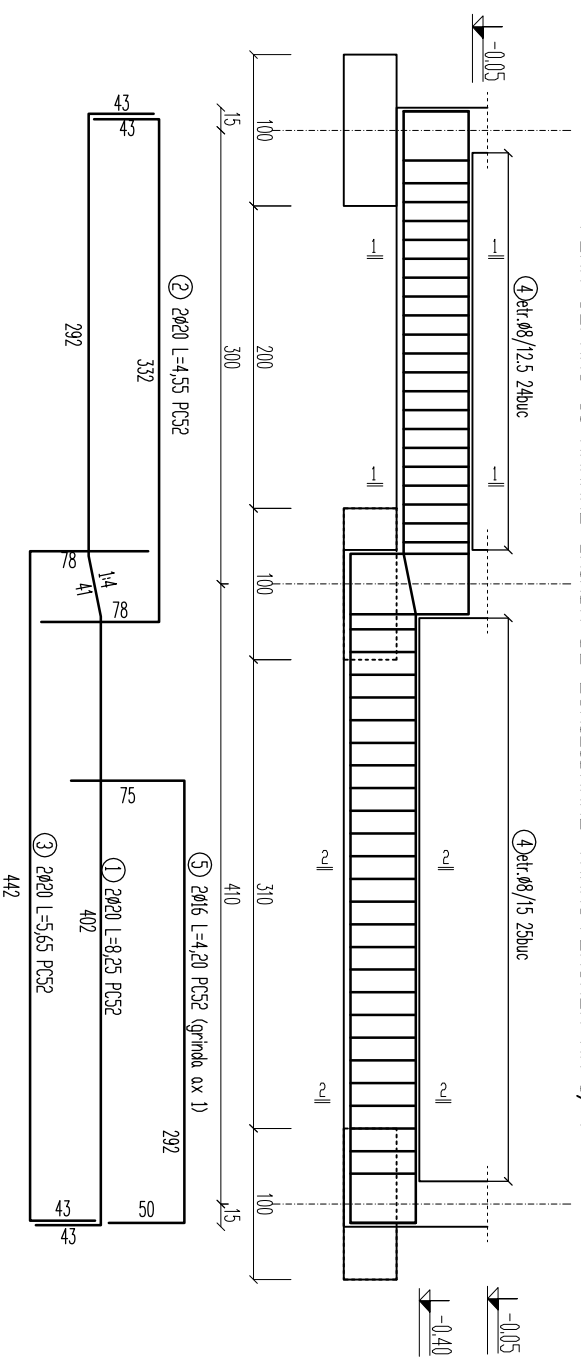
SECTIUNEA 1-1 (1:25)



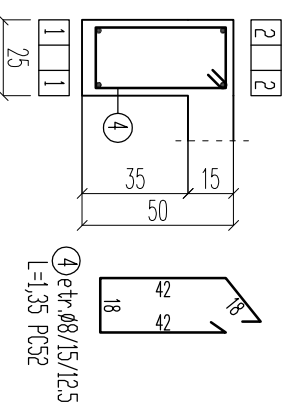
PLAN COFRAJ SI ARMARE GRINZI DE ECHILIBRARE TRANSVERSALE
1/50

Consum armatura pt. grinda de echilibrare transversala ax 2		Lungimi / ϕ							
Marca	ϕ	L	Buc.	(m)					
				OB37	PC52				
1	20	8.15	4	$\phi 6$	$\phi 8$	$\phi 10$	$\phi 12$	$\phi 20$	
2	8	1.35	50		68			33	
Total lungimi pe ϕ (m)									
Greutate pe ml (kg/m)					0.22	0.39	0.62	0.89	2.47
Greutate pe ϕ (m)					27				80
Greutate totala (kg)									107

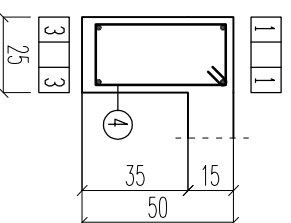
PLAN COFRAJ SI ARMARE GRINDA DE ECHILIBRARE TRANSVERSALA AX 1, 4



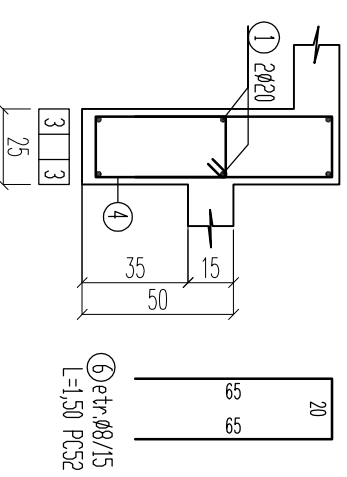
SECTIUNEA 1-1 (1:25)



SECTIUNEA 2-2 (1:25)
grinda ax 4



SECTIUNEA 2-2 (1:25)
grinda ax 1



Consum armatura pt. grinda de echilibrare transversala ax 1		Lungimi / ϕ							
Marca	ϕ	L	Buc.	(m)					
				OB37	PC52				
1	20	8.25	2	$\phi 6$	$\phi 8$	$\phi 10$	$\phi 16$	$\phi 20$	
2	20	4.55	2						17
3	20	5.65	2						9
4	8	1.35	50		68				11
5	16	4.20	2				8		
6	8	1.50	18		27				
Total lungimi pe ϕ (m)					95			8	37
Greutate pe ml (kg/m)					0.22	0.39	0.62	1.58	2.47
Greutate pe ϕ (m)					37			13	91
Greutate totala (kg)									142

Consum armatura pt. grinda de echilibrare transversala ax 4		Lungimi / ϕ							
Marca	ϕ	L	Buc.	(m)					
				OB37	PC52				
1	20	8.25	2	$\phi 6$	$\phi 8$	$\phi 10$	$\phi 12$	$\phi 20$	
2	20	4.55	2						17
3	20	5.65	2						9
4	8	1.35	50		68				11
Total lungimi pe ϕ (m)									37
Greutate pe ml (kg/m)					0.22	0.39	0.62	0.89	2.47
Greutate pe ϕ (m)					27				91
Greutate totala (kg)									118