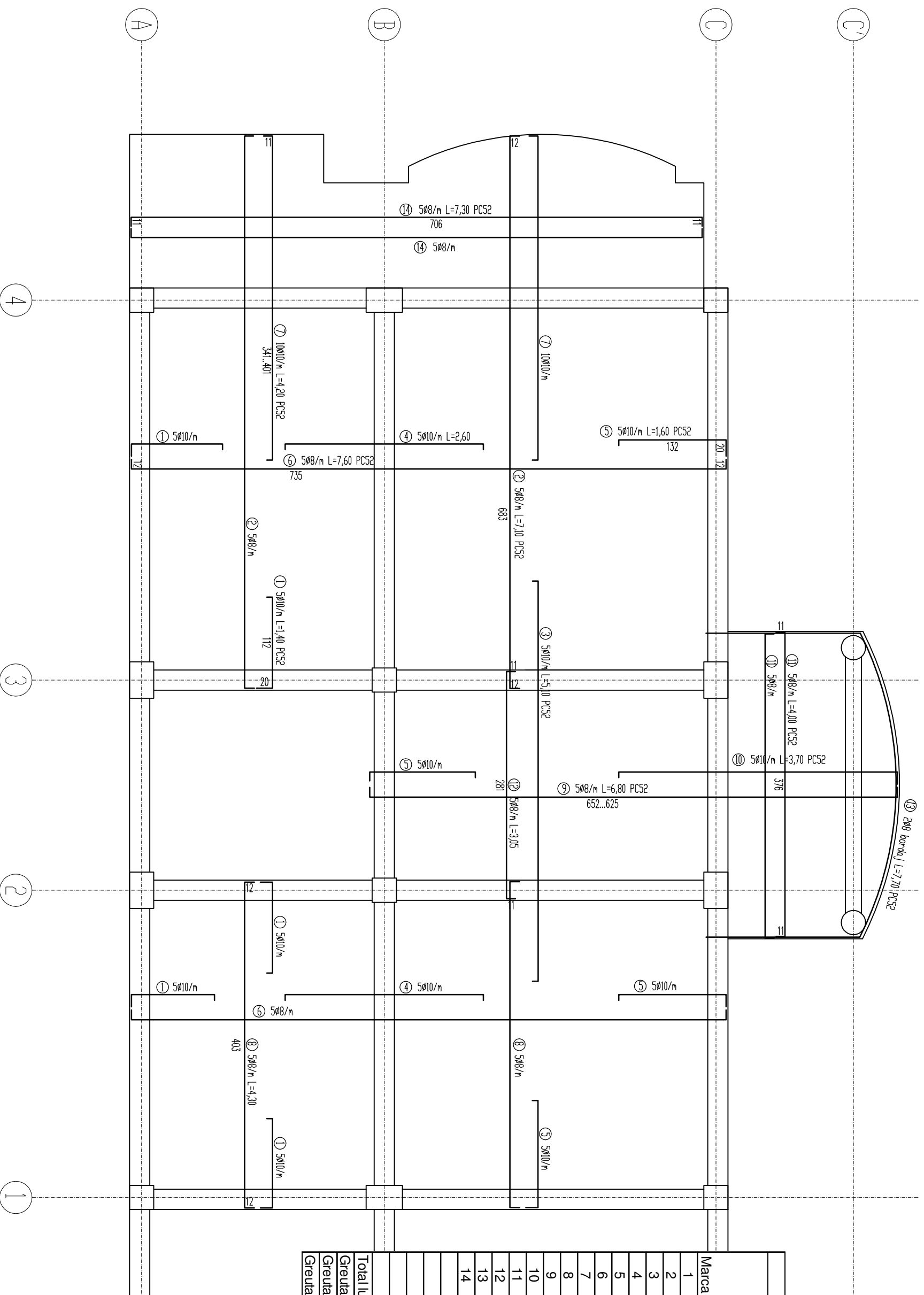


PLAN ARMARE PLACA COTA +2,95

1/50



Consum armatura pt. Placa cota 2.95		Lungimi / ϕ (m)						
Marca	ϕ	L	Buc.	PC52				
				$\phi 6$	$\phi 8$	$\phi 10$	$\phi 12$	$\phi 16$
1	10	1.40	89			125		
2	8	7.10	34	241				
3	10	5.10	20		102			
4	10	2.60	41		107			
5	10	1.60	73		117			
6	8	7.60	41	312				
7	10	4.20	68		286			
8	8	4.30	34	146				
9	8	6.80	21	143				
10	10	3.70	21		78			
11	8	4.00	16		64			
12	8	3.05	12		37			
13	8	7.70	2		15			
14	8	7.30	16		117			
Total lungimi pe ϕ (m)				1075	813			
Greutate pe ml (kg/m)				0.22	0.39	0.62	0.89	1.58
Greutate pe ϕ (m)				424	501			
Greutate totala (kg)				926				

CLASIFICARE CF.P100/06: CLASA III DE
 IMPORTANTA, AMPLASAMENT: OTOPENI,
 jud. ILEOV $T_c=1.5$ sec, $q_g=0.24$

BETON C20/25
 OTEL Pc 52,

Cota 0.00 este cota pardoselii finite de la parter

Acoperire cu beton c=15mm
 Cotele etrierilor se masoara la interior